

Chelmsford
Newsweekly

June 24, 1954



NEW CENTER SCHOOL TAKING SHAPE - Picture taken from Billerica St. shows the new Center school which is being built by the Vara Construction Co. It is expected that the building will be completed some time in December with hopes that it may be sooner.

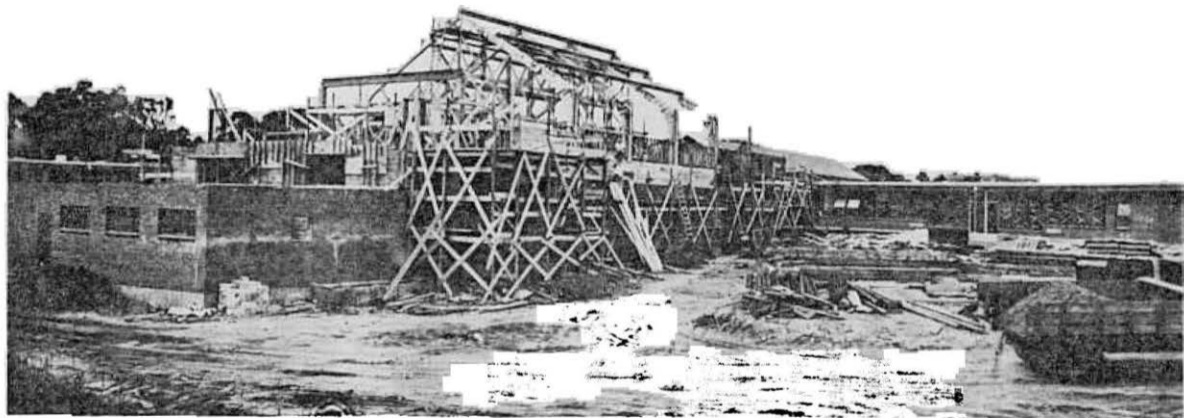


NEW SCHOOL CONSTRUCTION MOVES AHEAD---This panoramic shot show graphically the progress to date in the construction of the new Center school being erected off Billerica street. High school buildings may be seen in center background.

August 1954

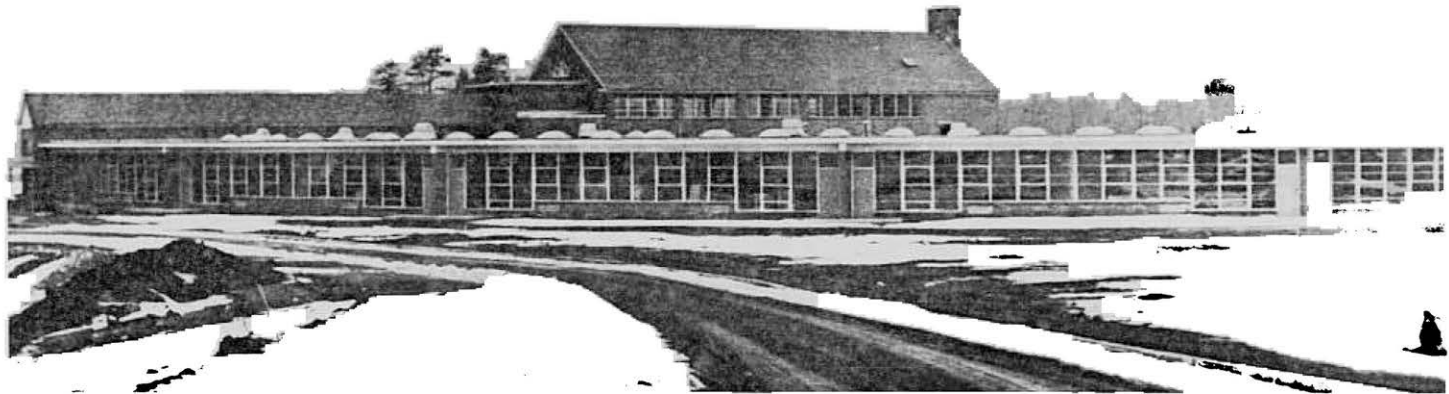
Chelmsford
Newsweekly

Aug 5, 1954



NEW CENTER SCHOOL DURING CONSTRUCTION---This a rear view of the new Center school during construction. Class rooms will be all on one floor in a semi-circle with the cafeteria and asembly-gym bisecting the class rooms. Construction of the asembly-gym can be seen with staging erected around it.

Chelmsford Newsweekly Dec 30 1954



BIGGEST PERMIT—The new Center elementary school, shown here as it is nearly ready for pupils, received the biggest building permit issued during 1954, a record building year in Chelmsford.



12/28/2004 F. Merriam



CENTER SCHOOL



12/27/2004 F. Merriam



CENTER
SCHOOL
84 BILLERICA ROAD