

FORM B – BUILDING

MASSACHUSETTS HISTORICAL COMMISSION
MASSACHUSETTS ARCHIVES BUILDING
220 MORRISSEY BOULEVARD
BOSTON, MASSACHUSETTS 02125

Assessor's Number USGS Quad Area(s) Form Number

84/336/7

Billerica

CLM.331

Town/City: Chelmsford

Place: (*neighborhood or village*): Chelmsford Center

Photograph



Address: 19-22 Central Square

Historic Name: Jonas Proctor Wheelwright Shop

Uses: Present: commercial

Original: wheelwright shop

Date of Construction: ca. 1820

Source: *History of Chelmsford 1910 – 1970*

Style/Form: altered beyond recognition

Architect/Builder: unknown

Exterior Material:

Foundation: stone

Wall/Trim: wood clapboard/wood

Roof: asphalt shingle

Outbuildings/Secondary Structures:

Ca. 1900 south building

Major Alterations (*with dates*):

Ca. 1950 storefront addition, replacement windows

Ca. 2000 replacement storefront materials

Condition: Fair

Moved: no yes **Date:**

Acreage: .15 A

Setting: The building is located on the northwest corner of Central Sq. and Cushing Place, facing Central Sq. The building encompasses about one-half of the lot with a paved parking area in the rear. Beaver Brook runs below the building and is visible across Central Sq. The surrounding area includes 19th and 20th c. commercial development.

Locus Map



Recorded by: Jennifer Burden, Gray & Pape, Inc.

Organization: Chelmsford Historical Commission

Date (*month / year*): June 2016

INVENTORY FORM B CONTINUATION SHEET

CHELMSFORD

19-22 CENTRAL SQUARE

MASSACHUSETTS HISTORICAL COMMISSION

220 MORRISSEY BOULEVARD, BOSTON, MASSACHUSETTS 02125

Area(s) Form No.

CLM.331

Recommended for listing in the National Register of Historic Places.

If checked, you must attach a completed National Register Criteria Statement form.

Use as much space as necessary to complete the following entries, allowing text to flow onto additional continuation sheets.

ARCHITECTURAL DESCRIPTION:

Describe architectural features. Evaluate the characteristics of this building in terms of other buildings within the community.

The site includes the ca. 1820 former wheelwright shop and the ca. 1900 building addition on the south of the former shop. The buildings have stone foundations, walls clad in wood clapboard with wood trim, and an asphalt-shingled cross gable roof. Two brick internal chimneys are located along the ridgeline of the side gable roof portion. The original portion of the building is three bays wide on the first story and has two bays on the second story. Two narrow front gable dormers are on the east slope of the roof; these dormers are present on a ca. 1885 photograph of the building (see below). The first story is divided into commercial space with a ribbon of four large plate glass windows in the south bay, a ribbon of four smaller windows in the north bay, and a recessed entry in the center that includes two entry doors. The second story features two, paired casement windows with decorative shutters. Historical photos from ca. 1885 and 1940 show the second story originally included four single windows. The current configuration was installed in ca. 1950 and the windows themselves were recently replaced.

The front gable portion of the building was added to the south wall in ca. 1900. This building is symmetrically divided into three bays on the first story, two on the second, and has a single window below the gable peak of the half story. The first story features a central entry flanked by plate glass windows. The second story features two larger plate glass windows with decorative shutters. A ca. 1916 photograph of the area shows that the first story this building originally included two bays with a bay window in the south and an entry door in the north bay. The same photo also shows smaller windows on the second story. In ca. 1950 a storefront was added the first story and the larger window openings were added to the second story. Since this date, the current storefront configuration has been applied to the building. Additional historical photographs of the building are available in *History of Chelmsford 1910 – 1970*.

The buildings are altered examples of 19th and 20th century commercial buildings that retain historic integrity of location and setting.

HISTORICAL NARRATIVE

Discuss the history of the building. Explain its associations with local (or state) history. Include uses of the building, and the role(s) the owners/occupants played within the community.

In 1816 Jonas Proctor purchased land in Chelmsford Center and constructed a wheelwright shop in this location to take advantage of water power from Beaver Brook. He and his family likely lived in the building until he constructed a house just to the north of this lot between 1831 and 1843. This house became known as the Charles Proctor House (Jonas's son) and remained on Central Square until 1915 when it was relocated to 22 Fletcher Street (it was demolished in 1974). After Jonas's death in 1844, the wheelwright shop passed to Charles. Charles worked with the blacksmith Nathan Dadman across Central Square to manufacture and repair wagons, sleds, and other goods. After Charles's death in 1880 Warren Johnson from Boston leased the building and continued the wheelwright trade. Johnson never purchased the property. In 1898 Charles's sister Julia Spaulding sold the property to James P. Emerson. A historical photo from ca. 1940 shows the building with an enclosed front porch, suggesting after Emerson's purchase the property was used at least in part for residential purposes. A barber pole on the right portion of the porch indicates a barber shop was in this location. In ca. 1950 storefront materials were installed across the buildings' façades. By 1959 the Archer Appliance Store and the Town and Country Shop businesses were located in the former wheelwright shop building and Dillon Cleaners was in the corner building. Currently four business are in the wheelwright building and a CPA office is in the corner building.

INVENTORY FORM B CONTINUATION SHEET

CHELMSFORD

19-22 CENTRAL SQUARE

MASSACHUSETTS HISTORICAL COMMISSION

220 MORRISSEY BOULEVARD, BOSTON, MASSACHUSETTS 02125

Area(s) Form No.

	CLM.331
--	---------

BIBLIOGRAPHY and/or REFERENCES

Beers, F.W. *County Atlas of Middlesex, Massachusetts*. J.B. Beers & Co., New York. 1875.

Chelmsford Historical Commission. *History of Chelmsford 1910 – 1970*. Chelmsford Historical Commission, Chelmsford, MA. 2011.

Genealogical research, including U.S. and Massachusetts census records; birth, marriage, and death records; and city directory records from ancestry.com.

Geo. H. Walker & Co. *Atlas of Middlesex County, Massachusetts*. Geo. H. Walker & Co., Boston, MA. 1889.

Middlesex North Registry of Deeds. www.lowelldeeds.com.

Walling, Henry F. *Map of Middlesex County, Massachusetts*. Smith & Bumstead, Boston, MA. 1856.



22 Central Square, facing west. November 2015.

INVENTORY FORM B CONTINUATION SHEET

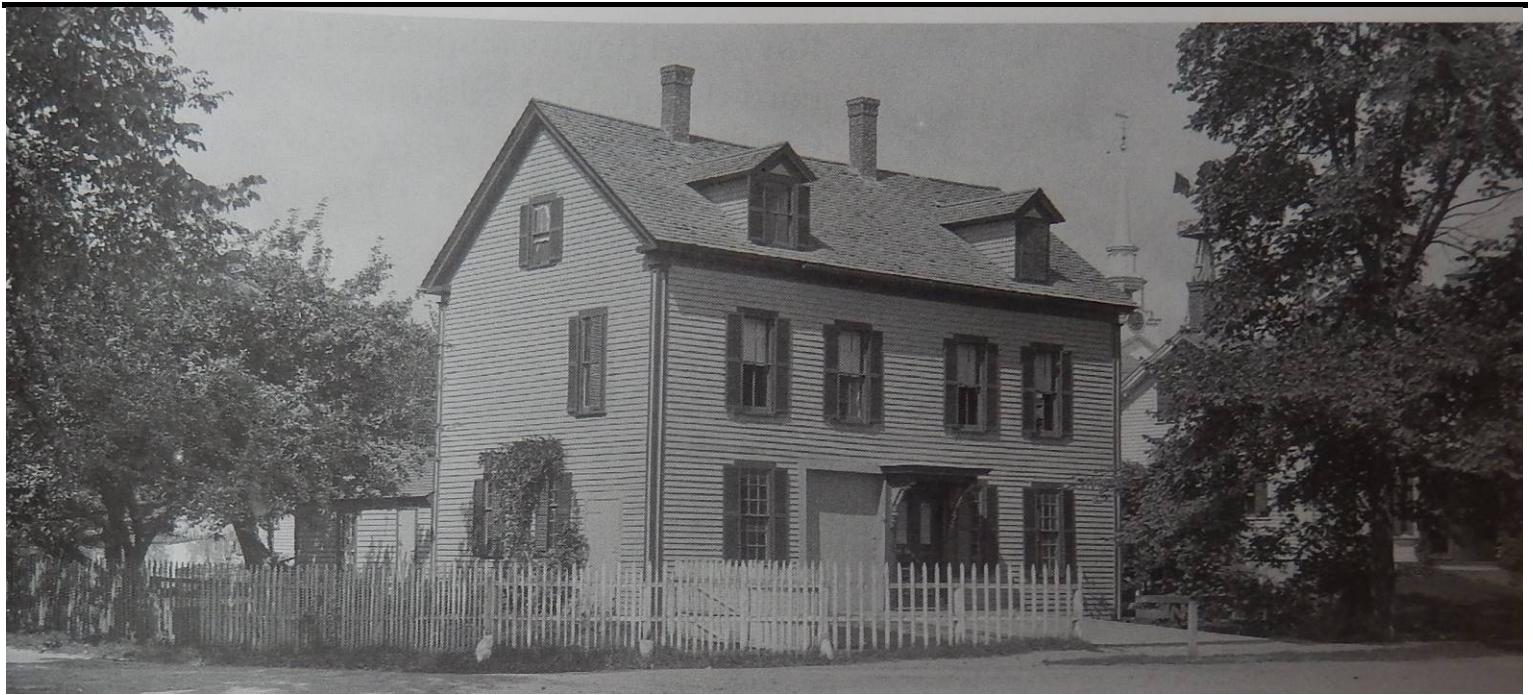
CHELMSFORD

19-22 CENTRAL SQUARE

MASSACHUSETTS HISTORICAL COMMISSION
220 MORRISSEY BOULEVARD, BOSTON, MASSACHUSETTS 02125

Area(s) Form No.

	CLM.331
--	---------



Ca. 1885 photograph of the wheelwright shop building. (Chelmsford Historical Society.)



Ca. 1959 photograph of 19 and 22 Central Square. (Chelmsford Historical Society.)