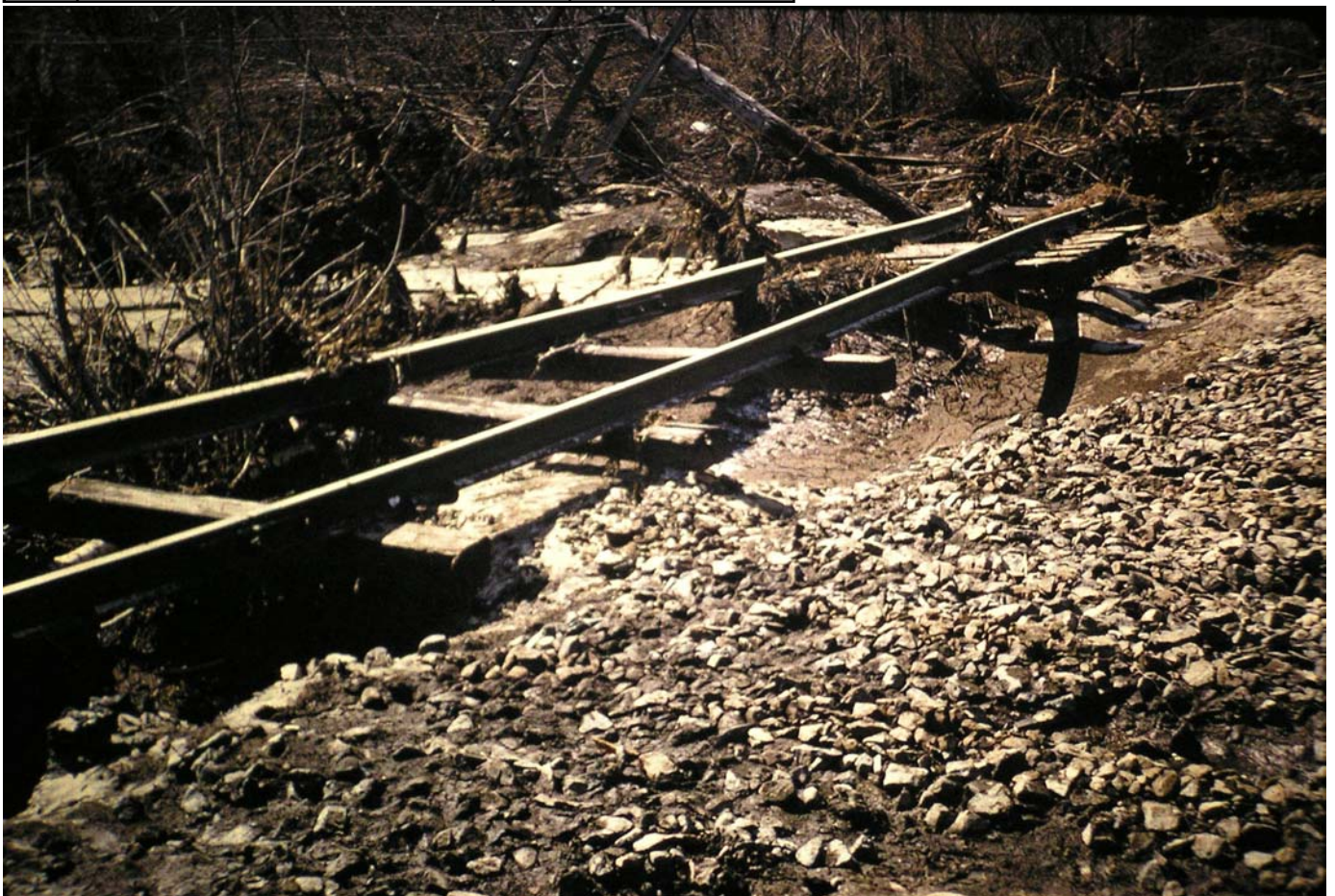


Path of destruction from Crystal Lake with Route 3 in upper right

4/4/1970 John A Goodwin

Stony Brook line tracks moved completely off the railbed





Next to Sony Brook line railbed 4/4/1970 John A Goodwin





4/4/1970 John A Goodwin





Stony Brook railbed looking toward Route 3 overpass 4/4/1970 John A Goodwin

The railbed today, looking toward the Route 3 overpass 9/25/2004 F Merriam





Walking toward Princeton Street 4/4/1970 John A Goodwin

The same view today 9/25/2004 F Merriam

