



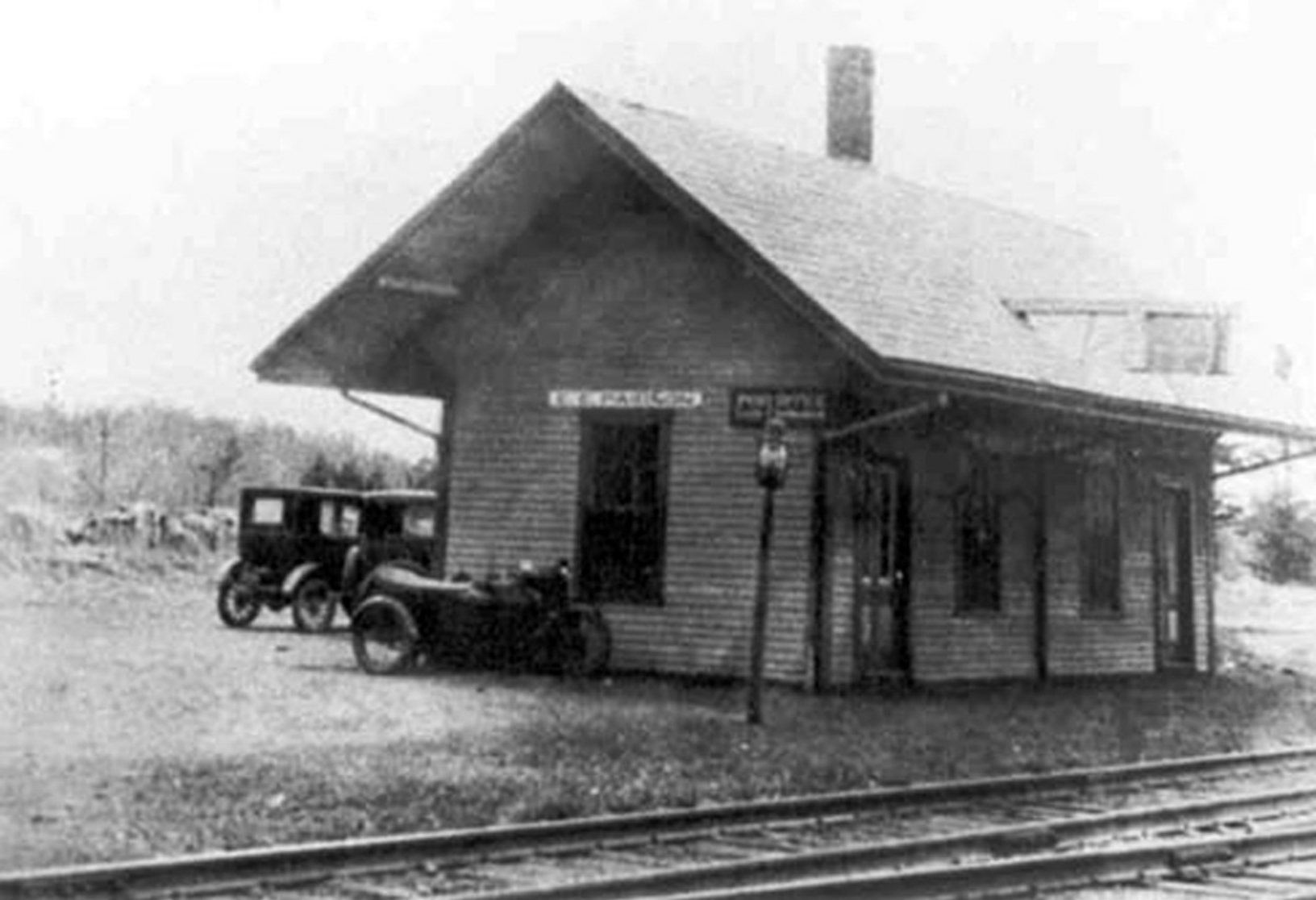
South Chelmsford Railroad Depot looking down at the junction of Maple and Parkerville Roads



South Chelmsford Railroad Depot, 19 Maple Road (Red Wing Farm) on left



This is the Depot site today, looking east, with Agway at left and the Lockheed Martin parking lot on the right



South Chelmsford Railroad Depot (later E. E. Paignon Store)



Looking West, with Agway in the freight depot location



Pulling out of the station, across Maple Road, and off to Chelmsford Center